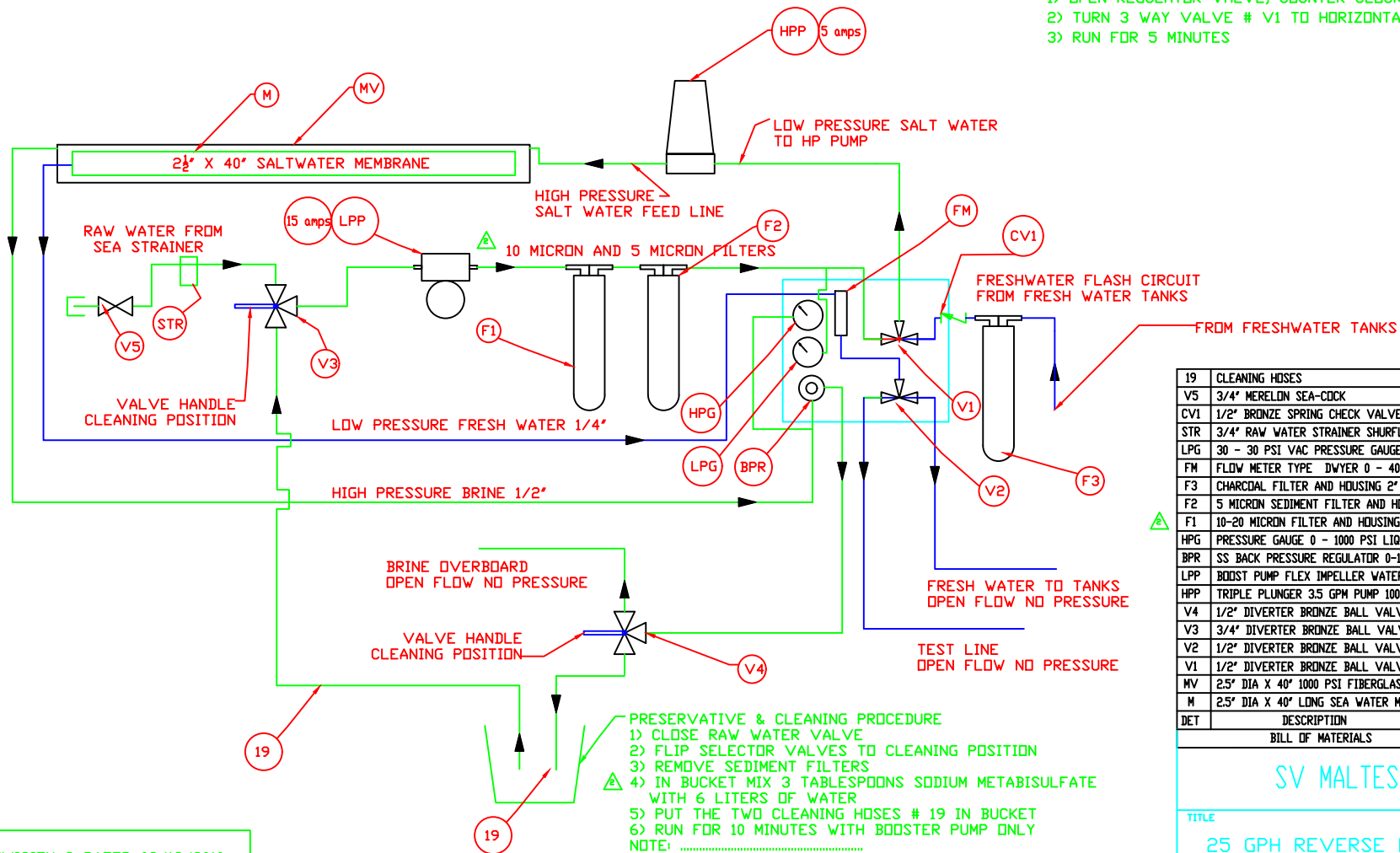


AA

▲ CLEANING SOLUTION MIXING RATIO:  
 ALKALINE SOLUTION: 1.5%  
 ACIDIC SOLUTION MIX: 5%  
 RUN BOTH FOR 40 MINUTES CIRCULATING THROUGH 6 LITERS IN A BUCKET  
 NO NEED TO PRE-FILL FILTER CANISTERS.

-----  
 BACK WATER FLUSH PROCEDURE:

- 1) OPEN REGULATOR VALVE, COUNTER CLOCKWISE
- 2) TURN 3 WAY VALVE # V1 TO HORIZONTAL POSITION
- 3) RUN FOR 5 MINUTES



19	CLEANING HOSES	GENERIC	1
V5	3/4" MERELON SEA-DOCK	FDRSPAR	1
CV1	1/2" BRONZE SPRING CHECK VALVE	GENERIC	1
STR	3/4" RAW WATER STRAINER SHURFLD	253-221-01	1
LPG	30 - 30 PSI VAC PRESSURE GAUGE	GENERIC	1
FM	FLOW METER TYPE DWYER 0 - 40 GPH	MMA30	1
F3	CHARCOAL FILTER AND HOUSING 2" X 10"	GENERIC	1
F2	5 MICRON SEDIMENT FILTER AND HOUSING 2" X 10"	GENERIC	1
F1	10-20 MICRON FILTER AND HOUSING 2" X 10"	GENERIC	1
HPG	PRESSURE GAUGE 0 - 1000 PSI LIQUID FILLED	GENERIC	1
BPR	SS BACK PRESSURE REGULATOR 0-1000 PSI CAT PUMP	7070	1
LPP	BOOST PUMP FLEX IMPELLER WATER PUPPY 12 VOLTS	JABSCO	1
HPP	TRIPLE PLUNGER 3.5 GPM PUMP 100 TO 1500 PSI CAT PUMP	277	1
V4	1/2" DIVERTER BRONZE BALL VALVE APOLLO	706-03-01	1
V3	3/4" DIVERTER BRONZE BALL VALVE APOLLO	706-04-01	1
V2	1/2" DIVERTER BRONZE BALL VALVE APOLLO	706-03-01	1
V1	1/2" DIVERTER BRONZE BALL VALVE APOLLO	706-03-01	1
MV	2.5" DIA X 40" 1000 PSI FIBERGLASS MEMBRANE VESSEL	GENERIC	1
M	2.5" DIA X 40" LONG SEA WATER MEMBRANE DOW CHEM	SW30-2540	1
DET	DESCRIPTION	PART NUMBER	QTY
BILL OF MATERIALS			

SV MALTESE FALCON

TITLE			
25 GPH REVERSE OSMOSIS SCHEMATIC			
DRAWING NUMBER		SCALE	
-		NTS	
DRAWN BY	DATE	APPROVED BY	REV
MB	MAY 2007	-	2